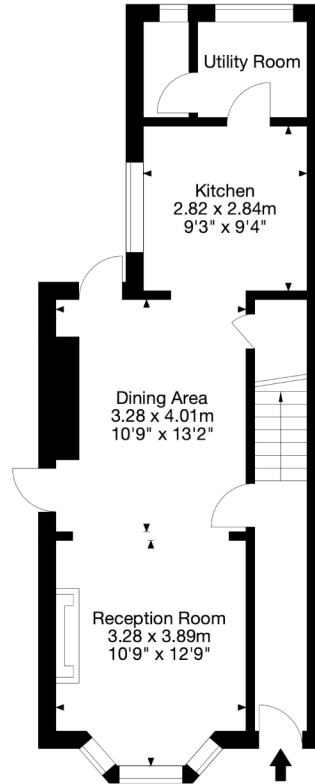
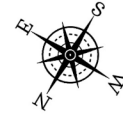


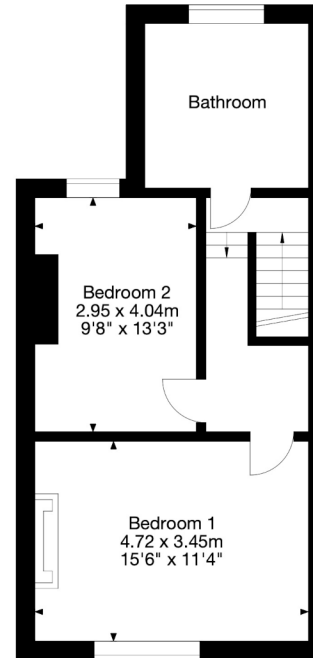
7 Kingsdown View, Fairfield Park, Bath BA1 6HU

Gross Internal Area (Approx.)

88 sq m / 947 sq ft



Ground Floor



First Floor



RESIDE

Capture Property Marketing 2024. Drawn to RICS guidelines. Not drawn to scale.
Plan is for illustration purposes only. All features, door openings, and window locations are approximate.
All measurements and areas are approximate and should not be relied on as a statement of fact.

Capture.